



# Accu-Dent<sup>®</sup>

Impression System

CE

## System 2<sup>™</sup>

Removable Dentate Impressions

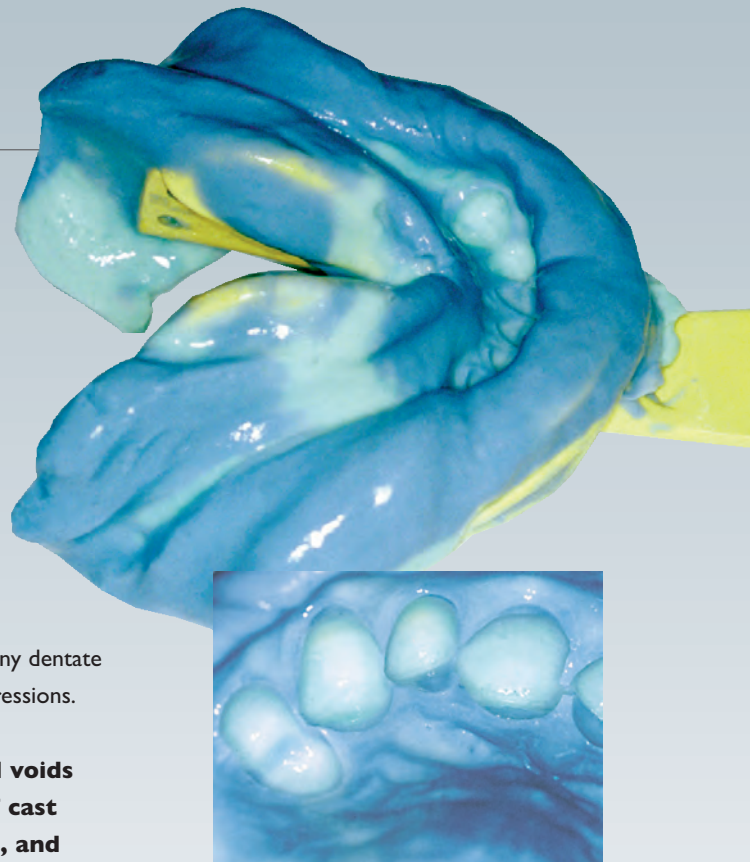
ivoclar  
vivadent<sup>®</sup>

# Perfect down to the smallest detail

Accu-Dent® System2™ is a high-quality, complete impression “system”. **System2 (for dentate impressions)** makes precise impressions, simplifying the work of the practitioner and the dental technician.

Just like Accu-Dent’s System1 (for complete denture impressions), the secret behind System2 rests in the unique relationship between the two impression materials. The Tray Accu-Gel® and the Syringe Accu-Gel are different, but chemically compatible irreversible hydrocolloids designed to work together in the mouth. The uniquely designed, autoclavable System2 impression trays work extremely well in many dentate cases, but were designed specifically for partial and immediate denture impressions.

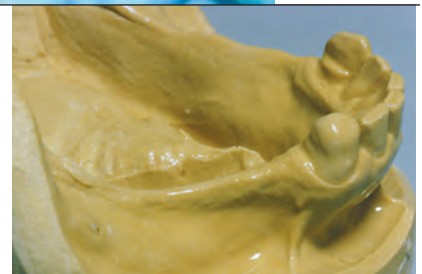
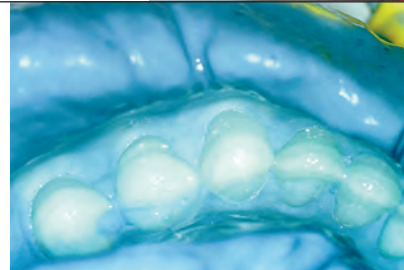
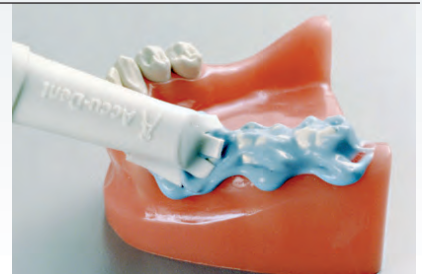
**The dimensional accuracy and freedom from air bubbles and voids make System2 models highly desirable for the fabrication of cast metal frameworks, orthodontic appliances, opposing models, and many other types of dentate cases.**



## Accu-Dent® System 2™ *Removable Dentate Impressions*



**Accu-Dent System 2 is based on a completely redesigned upper impression tray, and has a well-conceived adaptation of the lower impression tray, Accu-Gel, and the Prè-Sure Tip applicator. Accu-Dent System 2 is a well thought-out and high-quality system that makes perfect impressions without air bubbles.**



## The System2 Accu-Trays®

The System2 Accu-Trays represent a complete, functional redesign of the standard impression trays. Both the upper and lower System2 Accu-Trays have numerous unique features designed to improve the quality and completeness of dentate impressions without increasing the complexity of the procedure.

A few of the innovations found on the **upper** System2 Accu-Tray are:

1. The Peripheral Dam™ mechanically supports the Syringe Gel in the vestibules, preventing overly thin impression borders.
2. During the insertion of the Accu-Tray the highly viscous Tray Gel flows out through the Buccal Pouch Gates™ to support the strong buccinator muscles, resulting in a fuller distobuccal periphery.
3. The Palatal Flow Channel™ directs a flow of the Tray Gel up into the vault of the palate sweeping air bubbles from the anterior palate.

Some of the specific design adaptations in the **lower** System2 Accu-Trays are:

1. The Lingual Flanges push the sublingual glands and mylohyoid muscles out of the way to facilitate a complete impression of the lingual surface of the mandible while still including the retromolar pads in the impression.
2. The short distobuccal flanges on the lower Accu-Tray allow a flow of the highly viscous Tray Accu-Gel out over the external oblique ridge, especially good for distal extension partial dentures.
3. The Glossal Table encourages the patient to slide the tongue forward during the insertion of the Accu-Tray, significantly improving the impression of the retromylohyoid space.

Maxillary Tray



Mandibular Tray



## The Prè-Sure Tip™ Applicator

The Prè-Sure Tip Applicator allows the operator to place the light bodied Syringe Accu-Gel onto the teeth using the hydraulic pressure generated by the syringe. This eliminates air bubbles, voids and finning around the teeth, significantly improving the quality of the impression.

Prè-Sure Tip™ Applicator



### The System2 Syringe Accu-Gel

The light bodied System2 Syringe Accu-Gel (blue) is applied to the teeth with the Prè-Sure Tip and to the

vestibules with the catheter-tip of the syringe. Delicately border molded impressions with no bubbles or voids are easily produced.



### The System2 Tray Accu-Gel

The System2 Tray Accu-Gel (green) forms the body of the impression, both supporting the Syringe Accu-Gel in the

vestibules and taking an excellent impression of any edentulous areas of the mouth. The zero-flow Tray Gel will not flow down the patient's throat, greatly reducing the gag reflex in most patients.

# Accu-Dent®

## System 2™ Removable Dentate Impressions



### Complete System2 includes:

- 12 Sterilizable Accu-Trays (6 maxillary and 6 mandibular)
- 1 box (24 packages) Syringe Accu-Gel
- 1 box (24 packages) Tray Accu-Gel
- 2 Syringes
- 1 Water measuring vial
- 1 Thermometer
- 2 Prè-Sure Tip Applicators Soft
- 2 Prè-Sure Tip Applicators Medium
- 1 Tray holder
- 1 System2 complete procedural documentation



**System I also  
available for  
complete  
dentures!**

Accu-Dent is part of the BPS® Brand Removable Prosthetic System. BPS premium dentures incorporate the highest quality components and fabrication techniques available. For more information contact Ivoclar at the number below.



**ivoclar**  
**vivadent**®

Ivoclar Vivadent, Inc. 175 Pineview Drive, Amherst, New York 14228 • 716-691-0010 800-533-6825 • <http://www.ivoclarvivadent.us.com>  
CANADA: 23 Hannover Drive, St. Catharines, ON L2W 1A3 • 905-955-5400 800-263-8182

Accu-Dent is not a registered trademark of Ivoclar Vivadent, Inc.